



Uludag University Engineering Faculty
Textile Engineering Lab
16059 Bursa, Turkey
Tel : +90 (224) 294 20 64
Fax : +90 (224) 294 19 03



March 18, 2015

Attention to Lüksteks Oto Döşeme Malzemeler Ted Şirketi,

The antibacterial activities of samples which you sent us are quantitatively evaluated according to test method ASTM E2149 in Laboratory of Medical Microbiology, Medical School in Uludag University and the antibacterial results against both the Gram-positive (*Staphylococcus aureus* - ATCC 6538) and the Gram-negative (*Escherichia coli* - ATCC 35218) bacteria are given in the appendix.

Best Regards.


Assoc.Prof. Mehmet Orhan

Appendix 1. Final Report (Two pages)

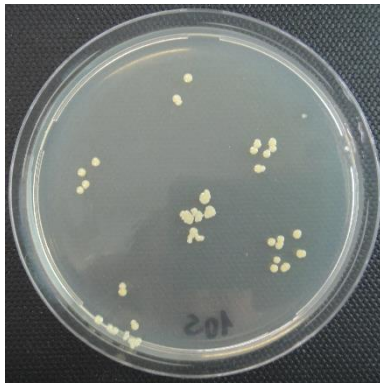
Appendix 1. Final Report (Two pages)

Table 1. The antibacterial activities against *Staphylococcus aureus* (ATCC 6538)* according to test method ASTM E2149

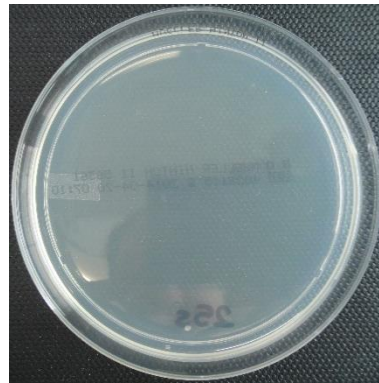
Sample codes	The antibacterial activities after 24 hours
	% bacterial reduction
Control fabric	- 86.00
Sample fabric	- 100.00

* The concentration of bacteria was adjusted to 3.05×10^5 (log 5.48) cfu**/ml for each sample.

** cfu : Colony forming units.



Control fabric



Sample fabric

Figure 1. The antibacterial activities against *Staphylococcus aureus* (ATCC 6538) according to test method AATCC 147

Table 2. The antibacterial activities against *Escherichia coli* (ATCC 35218)* according to test method ASTM E2149

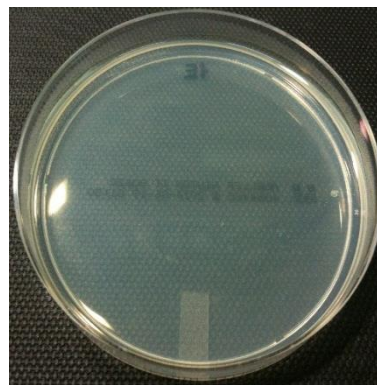
Sample codes	The antibacterial activities after 24 hours	
	% bacterial reduction	
Control fabric	- 16.67	
Sample fabric	- 100.00	

* The concentration of bacteria was adjusted to 1.63×10^4 (log 4.21) cfu**/ml for each sample.

** cfu : Colony forming units.



Control fabric



Sample fabric

Figure 2. The antibacterial activities against *Escherichia coli* (ATCC 35218) according to test method AATCC 147

Conclusion: The samples has been found to have good antibacterial effect against both the Gram-positive (*Staphylococcus aureus* - ATCC 6538) and the Gram-negative (*Escherichia coli* - ATCC 35218) bacteria.

Note: The negative values of bacterial reduction (%) demonstrate a decrease in bacterial growth. The value of (-) 100% indicates that all the bacteria on the surface were killed.